

Ostomy Pouch Replacement Routine



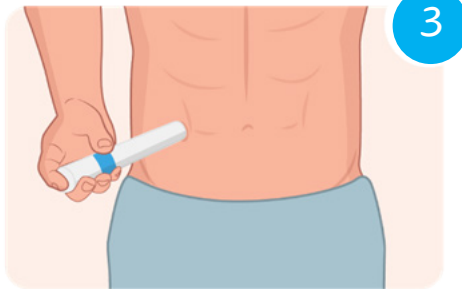
Prepare



Remove



Cover & Contain



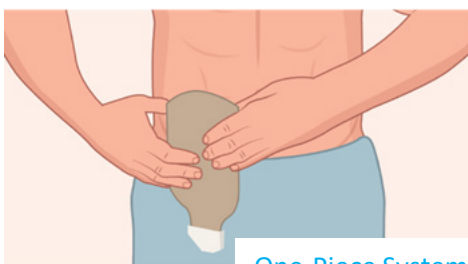
Clean & Dry



Replace



Two-Piece System



One-Piece System

Step 1: PREPARE SUPPLIES

1. Place supplies on counter within reach.
2. Cut barrier opening to correct size.
(if stoma size is changing measure in Step 3)
3. Remove protective backing from barrier.
4. Remove accessories from packaging.
5. Dampen/wet wash cloth.

Step 2: REMOVE POUCHING SYSTEM

1. Empty pouch contents in toilet.
2. Press skin above barrier with fingers and slowly peel barrier down/off.

Caution: Pulling or ripping off barrier may damage sensitive skin.

Step 3: COVER STOMA & CONTAIN OUTPUT

1. Wipe off stoma with tissue or cloth.
2. Place Pouch Replacement Cartridge (PRC) over stoma to contain output during change.

Step 4: CLEAN & DRY SKIN

1. Gently clean skin around stoma with wet wash cloth & warm water.
(Do not use soaps with creams or oils, oily residue prevents barrier for bonding to skin)
2. Thoroughly pat dry skin around stoma.

Step 5A: REPLACE TWO-PIECE POUCHING SYSTEM

1. Slide the baseplate down the PRC, press firmly against your skin, smooth out adhesive backing from bottom to top.
2. Use fingers or pressing device to press barrier evenly inside flange and around stoma.
3. Remove PRC and apply new pouch, click on from bottom of ring to top.

Step 5B: REPLACE ONE-PIECE POUCHING SYSTEM

1. Remove PRC and apply new one-piece pouching system. Apply from bottom (under stoma) to top, rolling adhesive on to skin.
2. Use fingers or pressing device to press barrier evenly inside flange area and around stoma.