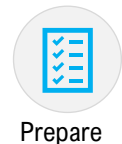


Ostomy Pouch Replacement Routine



Prepare



1

Step 1: PREPARE SUPPLIES

1. Place supplies on counter within reach.
2. Cut barrier opening to correct size.
(if stoma size is changing measure in Step 3)
3. Remove protective backing from barrier.
4. Remove accessories from packaging.
5. Dampen/wet wash cloth.



Remove



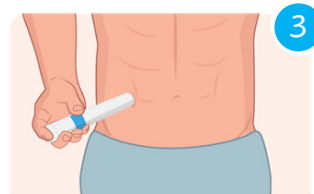
2

Step 2: REMOVE POUCHING SYSTEM

1. Empty pouch contents in toilet.
2. Press skin above barrier with fingers and slowly peel barrier down/off.
Caution: Pulling or ripping off barrier may damage sensitive skin.



Cover & Contain



3

Step 3: COVER STOMA & CONTAIN OUTPUT

1. Wipe off stoma with tissue or cloth.
2. Place Pouch Replacement Cartridge (PRC) over stoma to contain output during change.



Clean & Dry



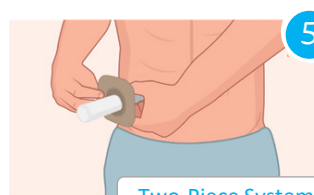
4

Step 4: CLEAN & DRY SKIN

1. Gently clean skin around stoma with wet wash cloth & warm water. *(Do not use soaps with creams or oils, oily residue prevents barrier for bonding to skin)*
2. Thoroughly pat dry skin around stoma.



Replace



5

Step 5A: REPLACE TWO-PIECE POUCHING SYSTEM

1. Slide the baseplate down the PRC, press firmly against your skin, smooth out adhesive backing from bottom to top.
2. Use fingers or pressing device to press barrier evenly inside flange and around stoma.
3. Remove PRC and apply new pouch, click on from bottom of ring to top.

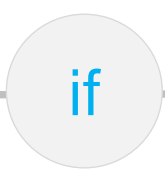
Two-Piece System



One-Piece System

Step 5B: REPLACE ONE-PIECE POUCHING SYSTEM

1. Remove PRC and apply new one-piece pouching system. Apply from bottom (under stoma) to top, rolling adhesive on to skin.
2. Use fingers or pressing device to press barrier evenly inside flange area and around stoma.



SIZING

New ostomates may have stoma size reductions. Measure stoma & cut barrier until stoma size stabilizes.



WHEN

Change 2 to 3 times per week or sooner if skin feels itchy or leaks occur.



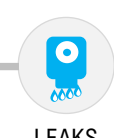
PRC

Pouch Replacement Cartridges are available in 12 sizes 1/2" (12mm) to 1 7/8" (46mm).



ADHESIVE REMOVER

Adhesive remover spray or wipes can be used while peeling back baseplate and afterwards to remove adhesive residue.



LEAKS

If leaks occur: Inspect baseplate for problem areas. Creases in skin often require barrier rings or paste fillers.



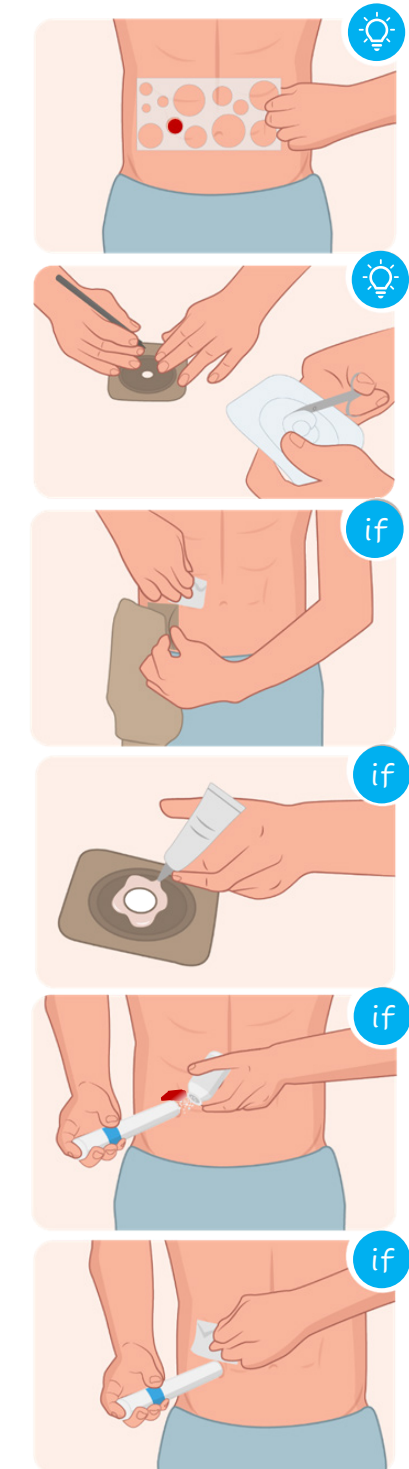
Skin Irritation

Stoma Powder: Wash & dry skin thoroughly. Apply small amounts of stoma powder to raw, moist irritated skin only. Gently brush away excess powder with tissue. Remove powder from non-affected skin, it may interfere with the barrier's adhesion to skin.



PROTECTIVE BARRIER

Barrier wipes/spray can be used for added skin protection. Apply evenly to dry skin around the stoma. Allow Skin Barrier solution to dry completely before applying new barrier.



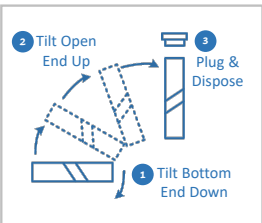
Nurse and Caregiver Options

Option A: Standing During Change



1. Remove pouching system, wipe off stoma, cover stoma with correct size cartridge.
2. If able, ostomate should hold cartridge in place.

Option B: Lying Down



1. Same instructions as (Option 1). Prop person up, rather than lying flat, if possible.
2. Removing: Place tissue under bottom of cartridge, tilt the bottom down while tilting the top upwards.

Option C: Both Sitting Down



1. Same instructions as (Option 1).
2. Stretch skin to smooth creases when reapplying pouching system.

Option D: Patient on Exam Table



1. Patient leans back when applying pouch.
2. Stretch skin to smooth creases when reapplying pouching system.

We're here to help.

